

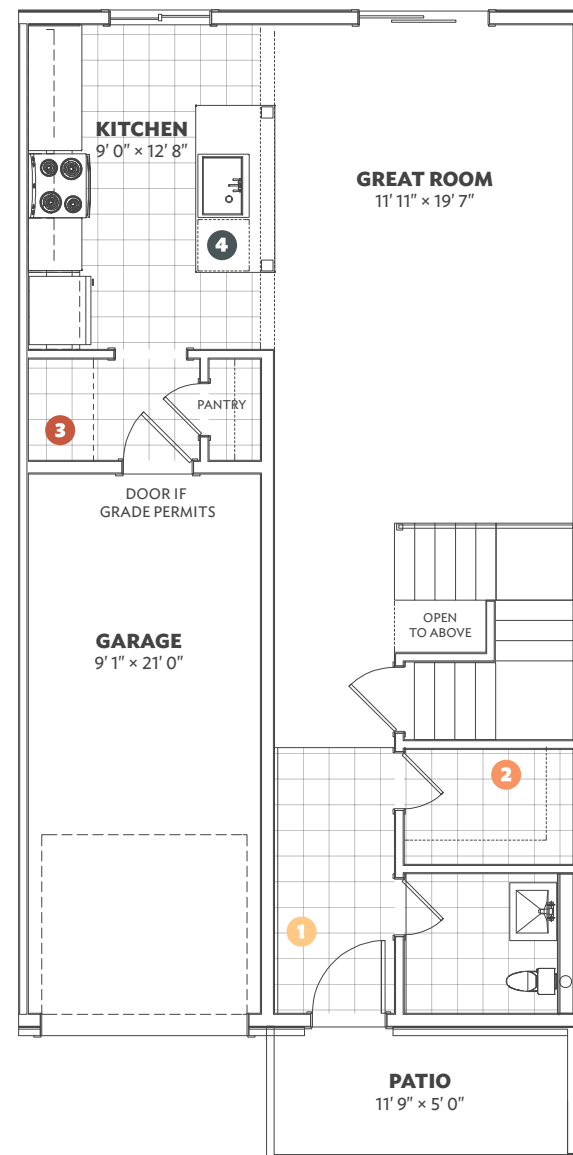
# Bear Creek RIDGE

## CLASSIC TOWN - 1503

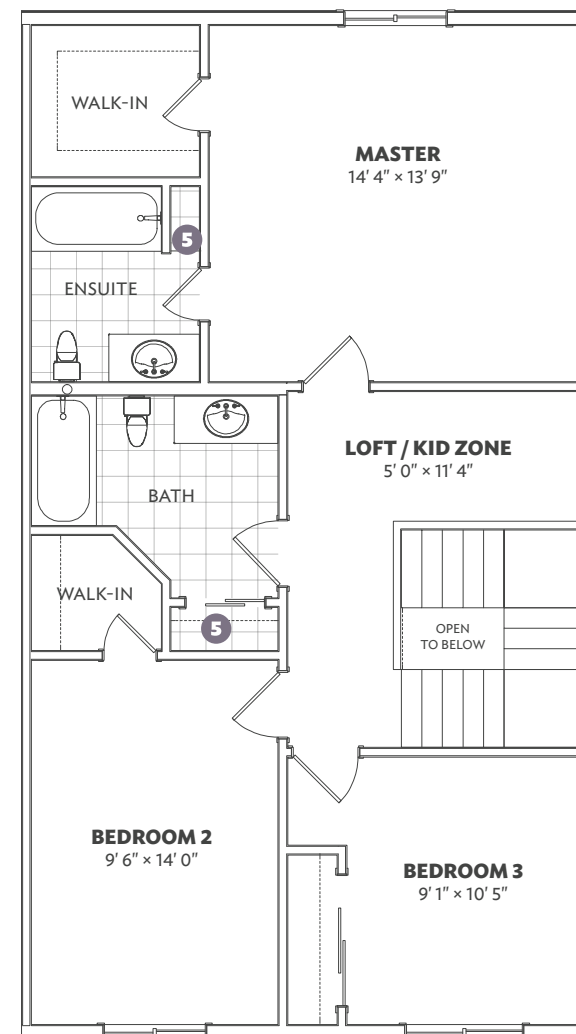
### FEATURES / UPGRADES

- 1** STOP-N-DROP STATION  
INCL/ELECTRICAL/USB OUTLET
- 2** VACUUM CHARGING STATION
- 3** OPTIONAL PET WASHING STATION
- 4** ISLAND W/ CABINET AND  
BUILT IN DINING
- 5** LINEN
- B** TOP FLOOR UPGRADE:  
4 BEDROOMS

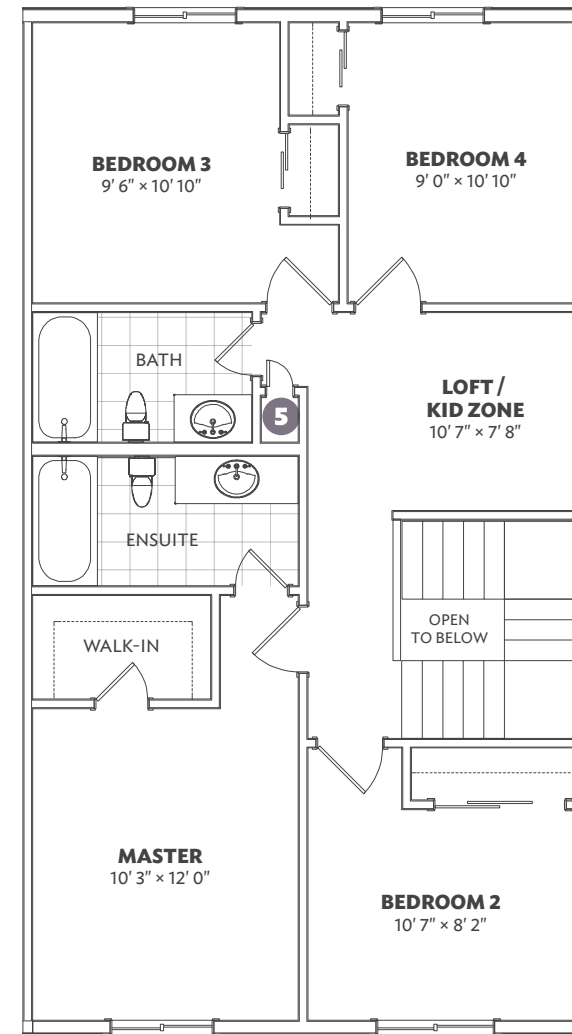
Main Floor



Top Floor



**B** Top Floor Upgrade

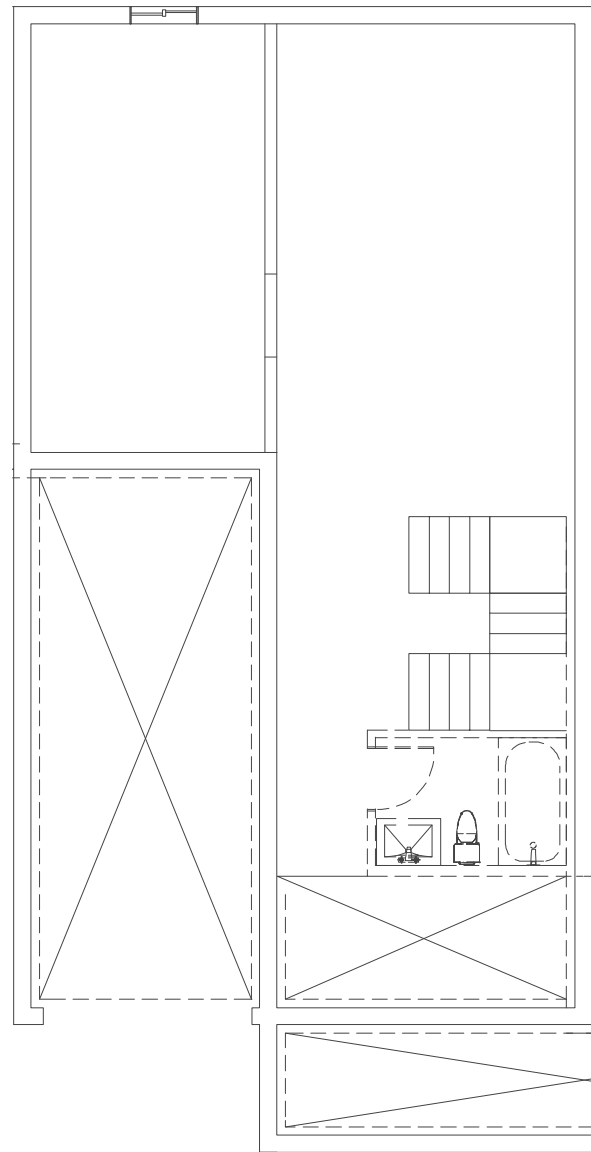


All Material, specifications and floor plans are subject to change without notice. House renderings are artist's conception and may be built as a mirror image. All floor plans are approximate dimensions. Actual useable floor space may vary from the stated floor area. Colour representations are approximate and subject to change. Municipal Architectural Controls may require modification to exterior material used, exterior house design, appearance and colours. Window sizes may change from floor to floor. Subject to Change E. & O.E. Pratt Homes Barrie. Bear Creek Ridge 2017.

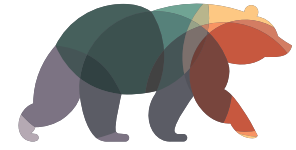
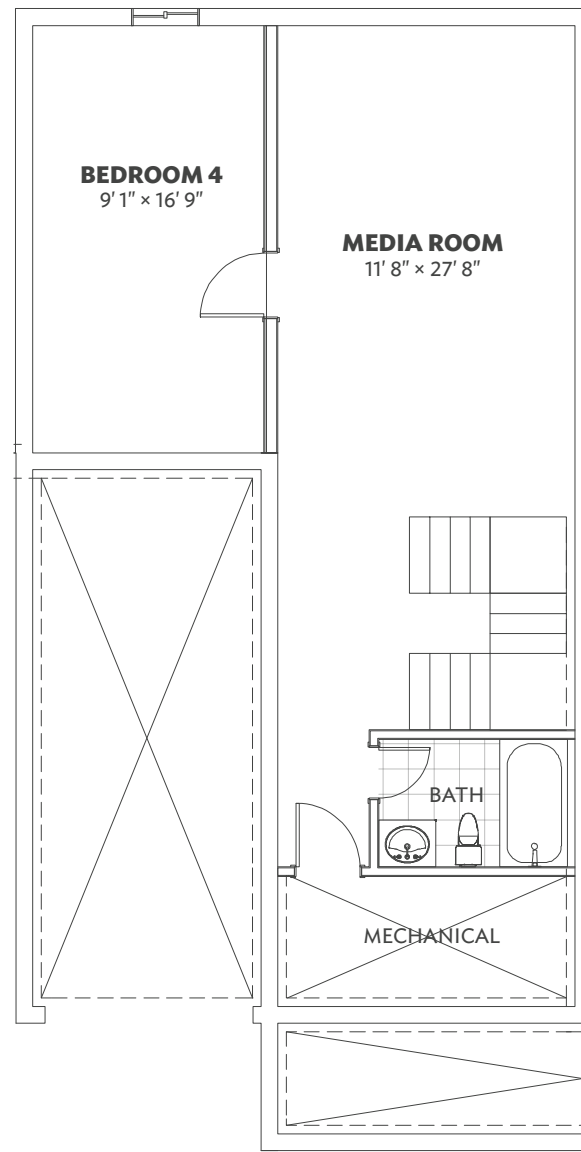
*Pratt Homes*

WELCOME TO THE FAMILY  
SINCE · 1890

Basement



**B** Upgrade Finished Basement



# Bear Creek RIDGE

## CLASSIC TOWN - 1503

### FEATURES / UPGRADES

- B** BASEMENT UPGRADE:  
FINISHED BASEMENT

*Pratt Homes*

WELCOME TO THE FAMILY  
SINCE 1890

All Material, specifications and floor plans are subject to change without notice. House renderings are artist's conception and may be built as a mirror image. All floor plans are approximate dimensions. Actual useable floor space may vary from the stated floor area. Colour representations are approximate and subject to change. Municipal Architectural Controls may require modification to exterior material used, exterior house design, appearance and colours. Window sizes may change from floor to floor. Subject to Change E. & O.E. Pratt Homes Barrie. Bear Creek Ridge 2017.