

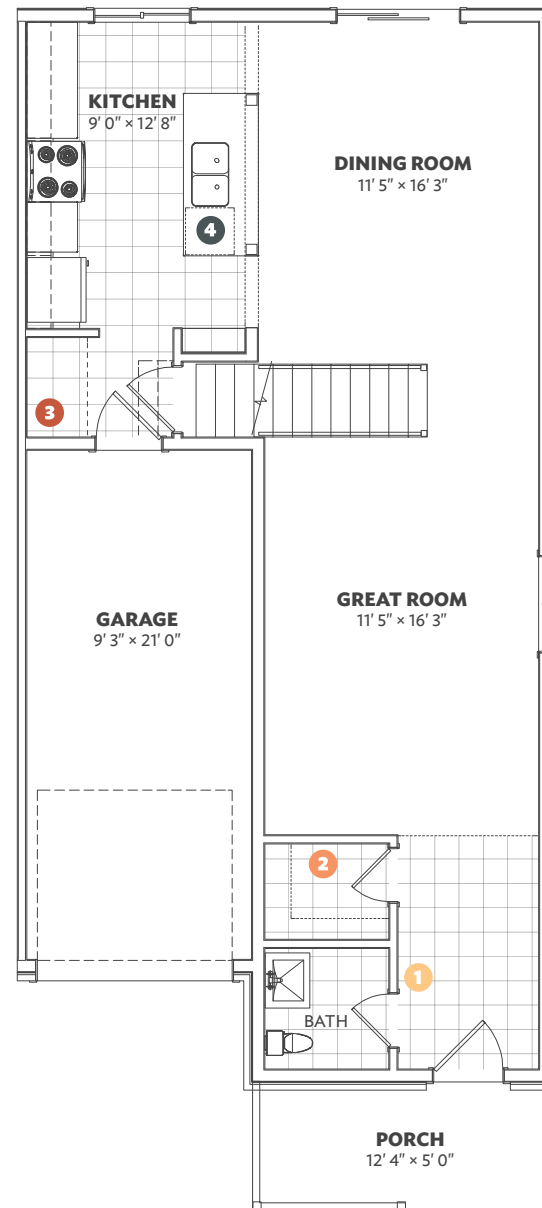
Bear Creek RIDGE

CLASSIC TOWN - 1603

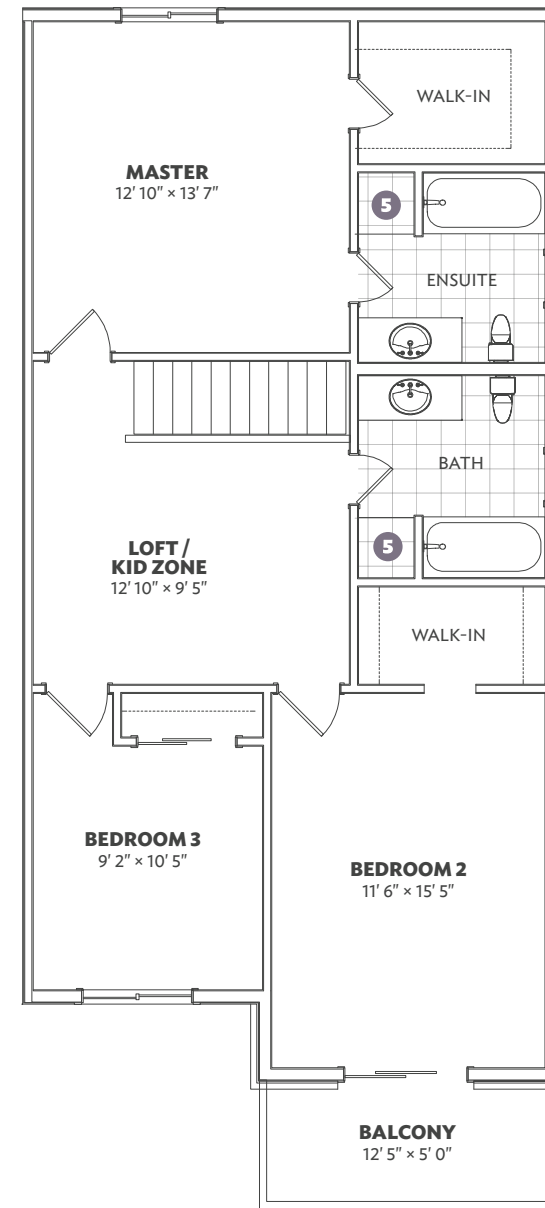
FEATURES / UPGRADES

- 1** STOP-N-DROP STATION
INCL/ELECTRICAL/USB OUTLET
- 2** VACUUM CHARGING STATION
- 3** OPTIONAL PET WASHING STATION
- 4** ISLAND W/ CABINET AND
BUILT IN DINING
- 5** LINEN
- B** TOP FLOOR UPGRADE:
4 BEDROOMS

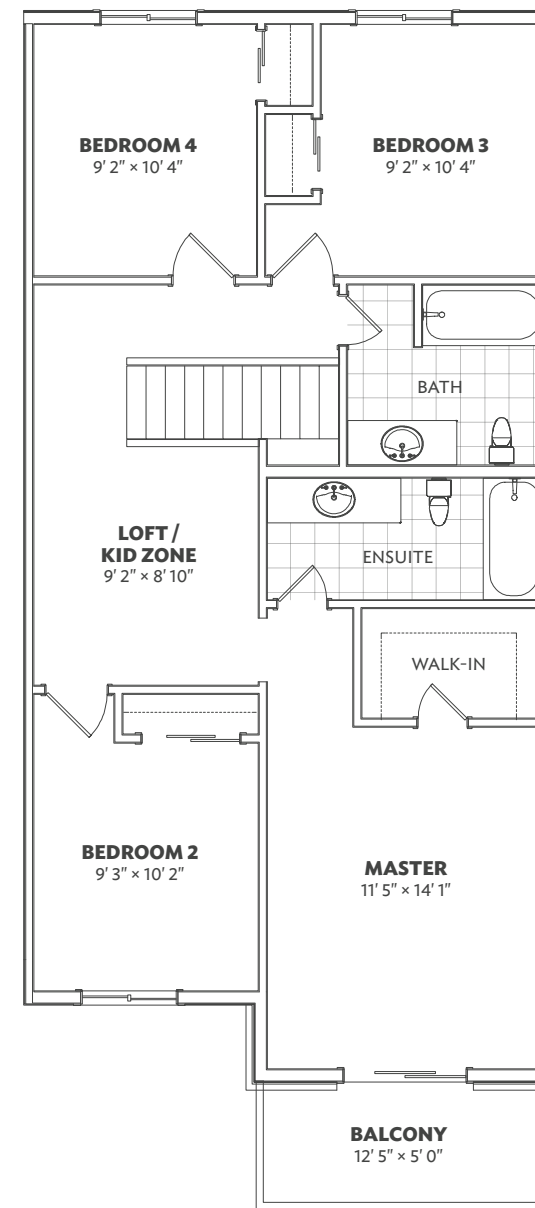
Main Floor



Top Floor



B Top Floor Upgrade

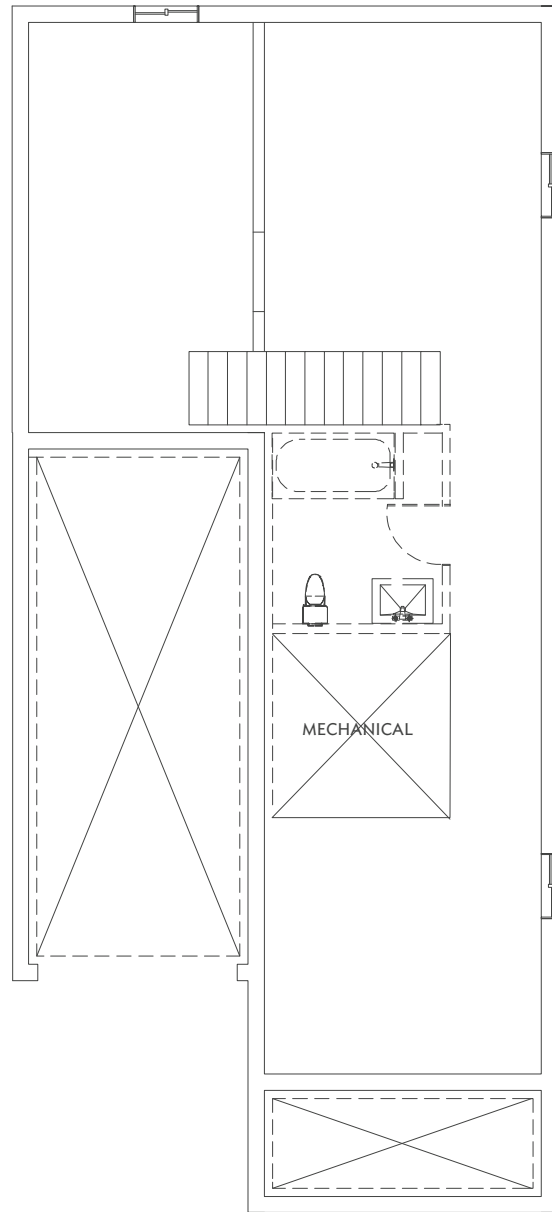


All Material, specifications and floor plans are subject to change without notice. House renderings are artist's conception and may be built as a mirror image. All floor plans are approximate dimensions. Actual useable floor space may vary from the stated floor area. Colour representations are approximate and subject to change. Municipal Architectural Controls may require modification to exterior material used, exterior house design, appearance and colours. Window sizes may change from floor to floor. Subject to Change E. & O.E. Pratt Homes Barrie. Bear Creek Ridge 2017.

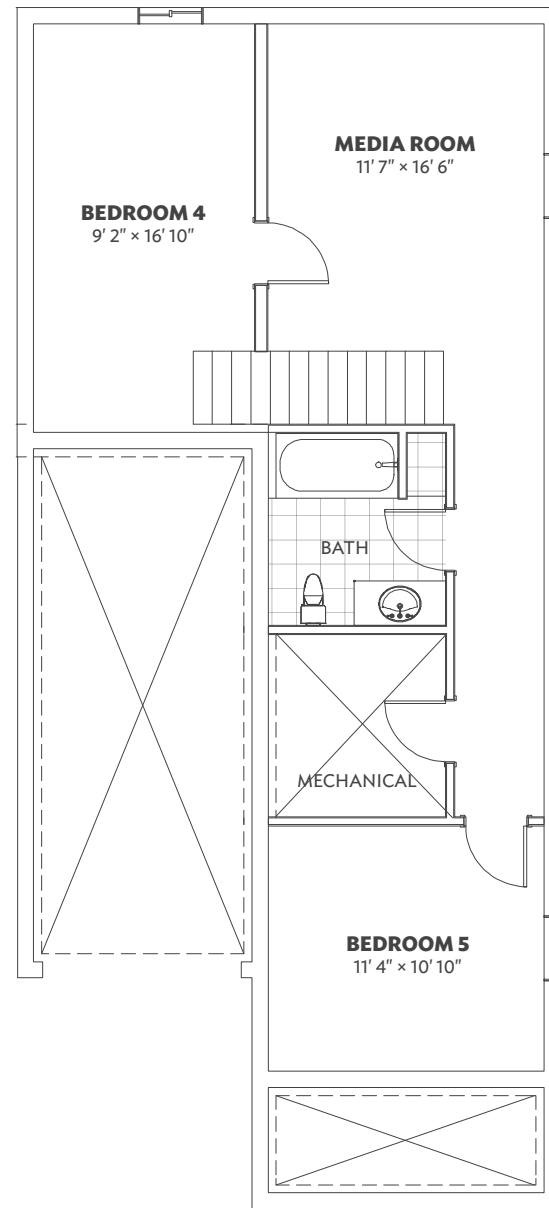
Pratt Homes

WELCOME TO THE FAMILY
SINCE · 1890

Basement



B Basement Upgrade



Bear Creek RIDGE

CLASSIC TOWN - 1603

B BASEMENT UPGRADE:
FINISHED BASEMENT

Pratt Homes

WELCOME TO THE FAMILY
SINCE 1890

All Material, specifications and floor plans are subject to change without notice. House renderings are artist's conception and may be built as a mirror image. All floor plans are approximate dimensions. Actual useable floor space may vary from the stated floor area. Colour representations are approximate and subject to change. Municipal Architectural Controls may require modification to exterior material used, exterior house design, appearance and colours. Window sizes may change from floor to floor. Subject to Change E. & O.E. Pratt Homes Barrie. Bear Creek Ridge 2017.